

PART OF THE S.E. 1/4  
SECTION 10, T.6N., R.1E., S.L.B. & M.

IN WEBER COUNTY  
SCALE 1" = 100'

TAXING UNIT: 317

CENTER OF SEC. 10 T6N R1E

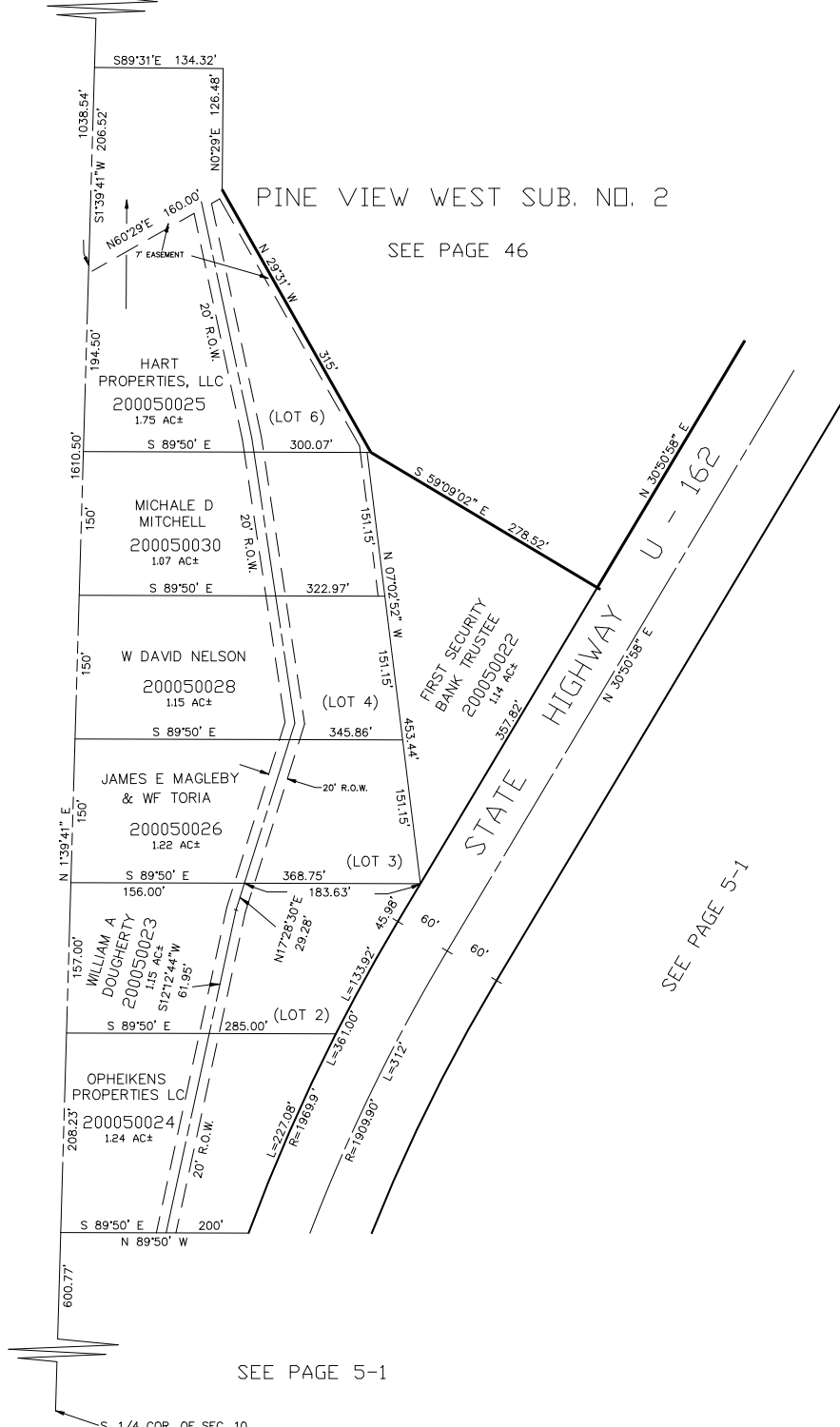
PINE VIEW WEST SUB. NO. 2

SEE PAGE 46

SPURLOCK SUB. PLAT 1

SEE PAGE 6 & 7

SEE PAGE 5-1



7' UTILITY & DRAINAGE EASEMENTS EACH SIDE OF PROPERTY LINES AS INDICATED BY DASHED LINES EXCEPT AS OTHERWISE SHOWN.

SEE PAGE 5-1

S. 1/4 COR. OF SEC. 10